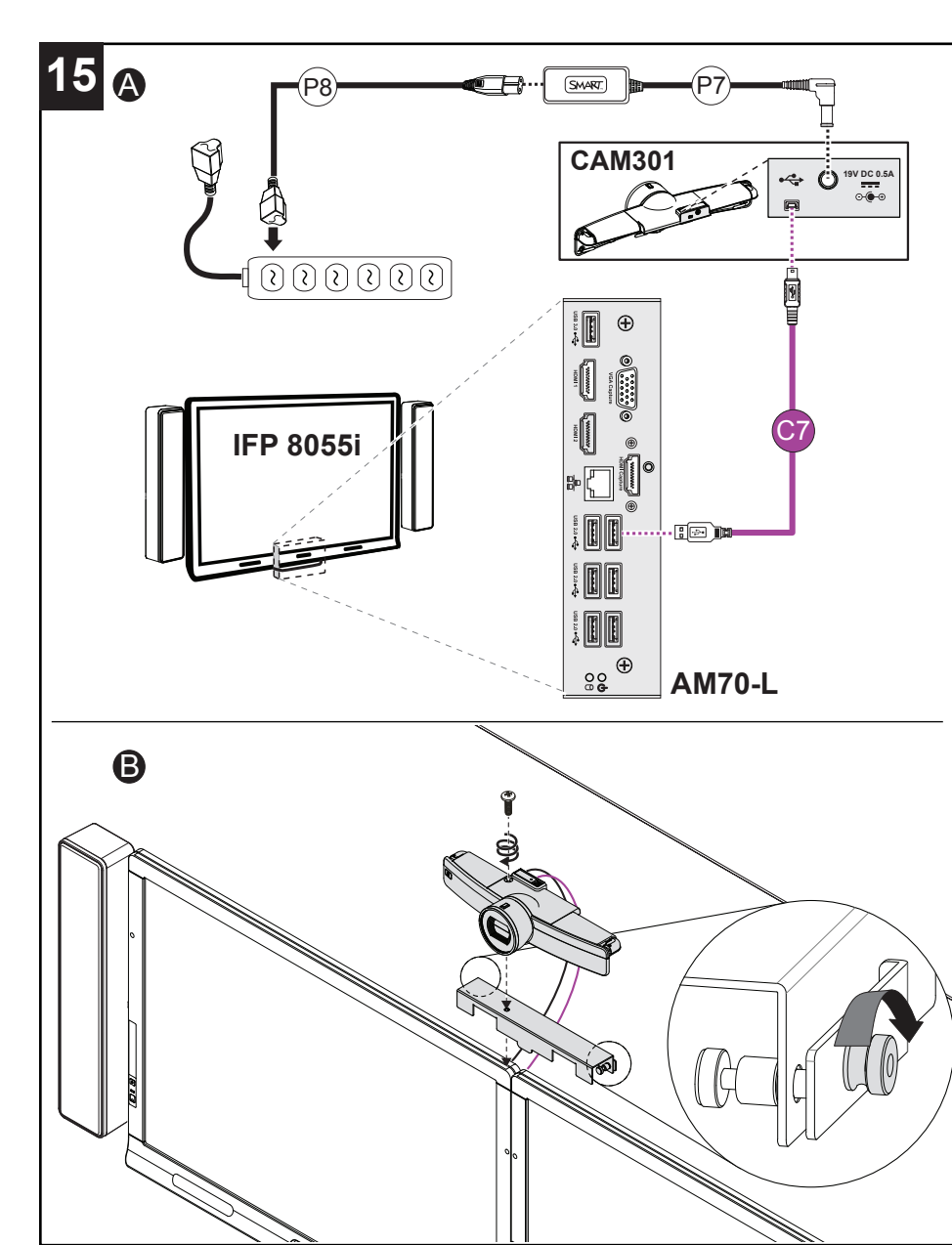
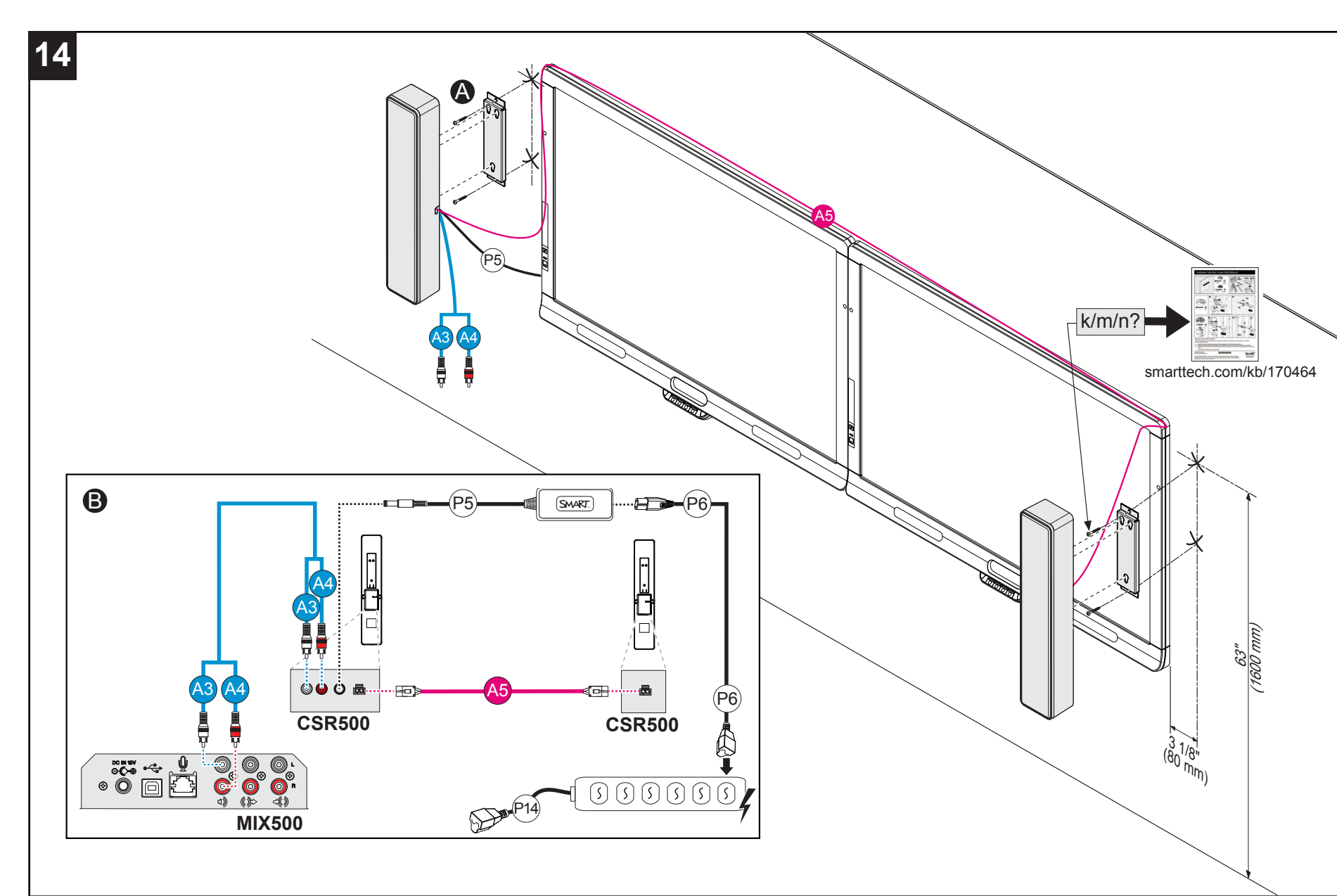
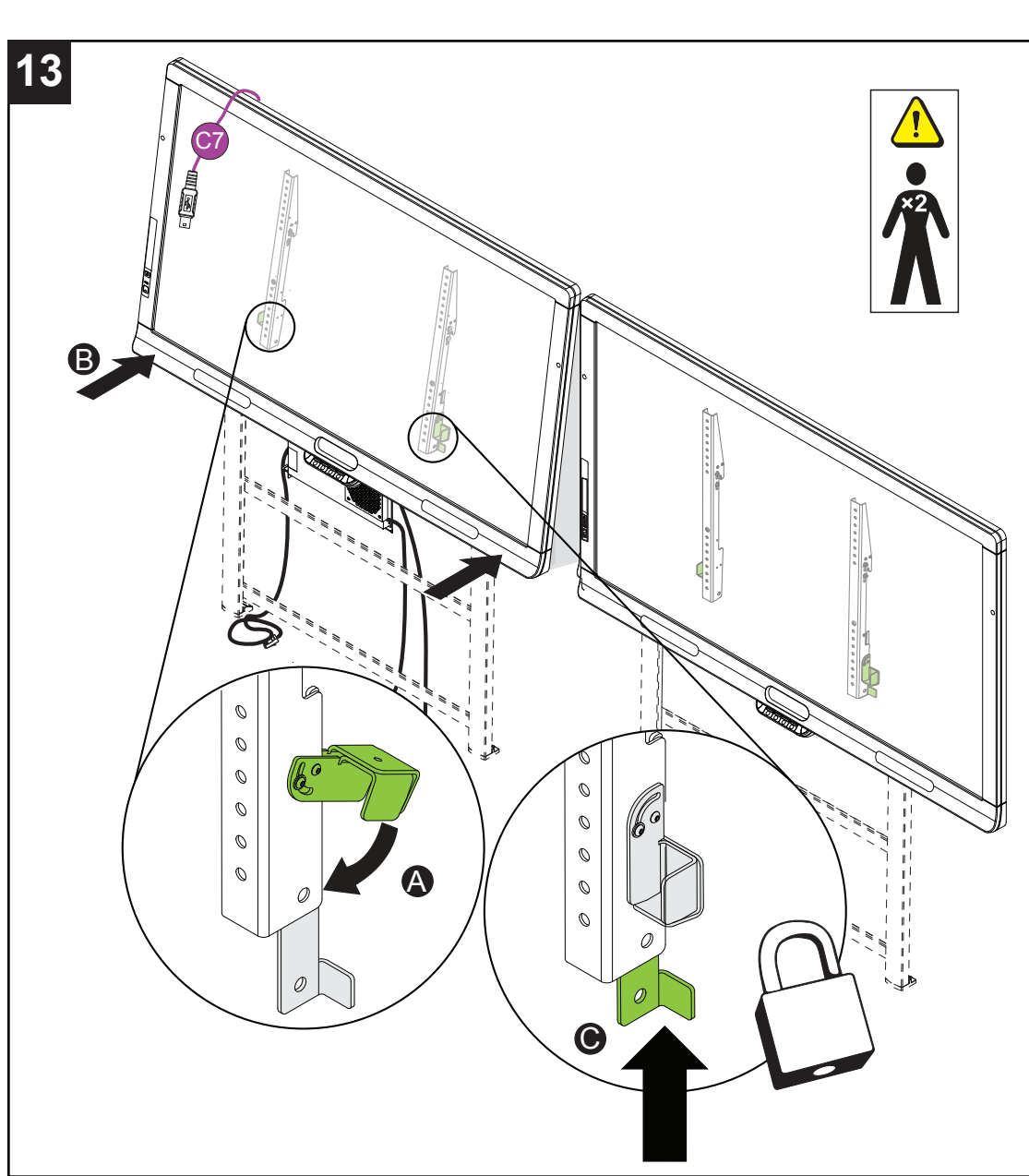
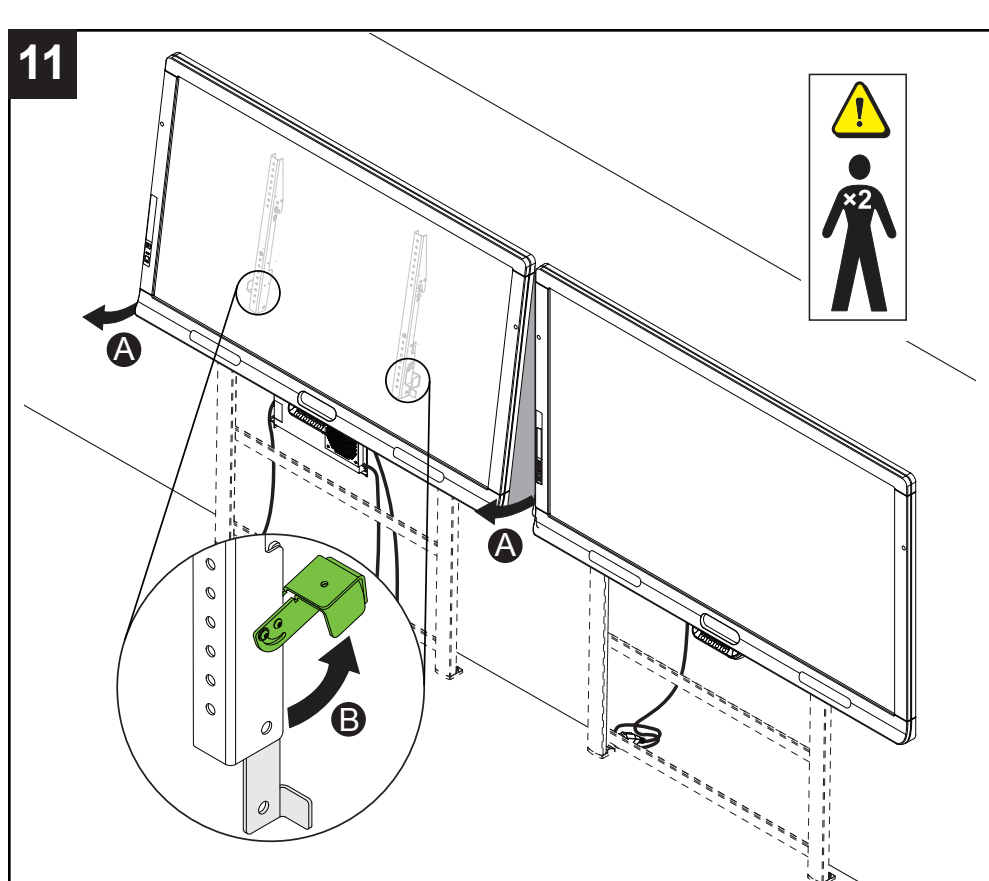
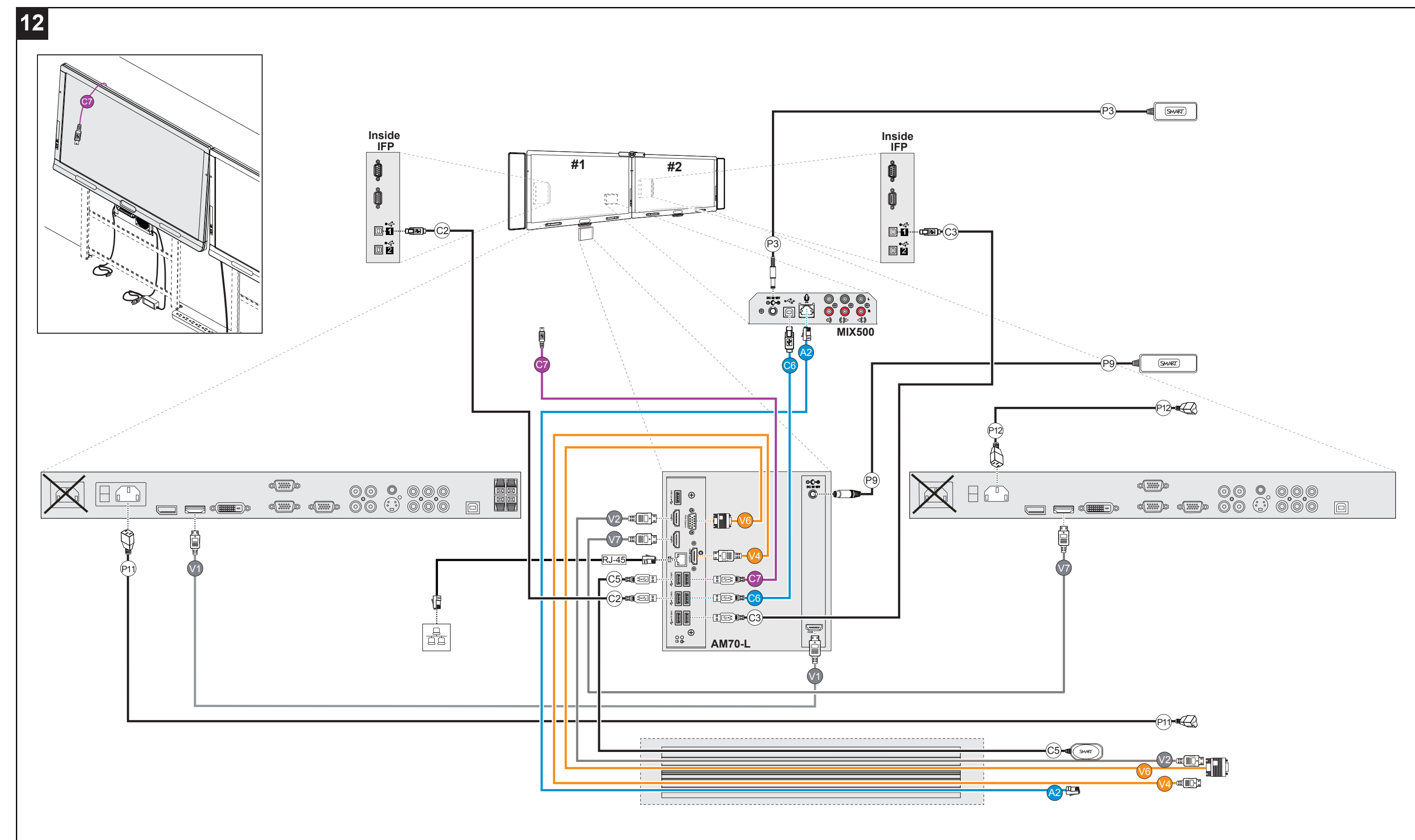
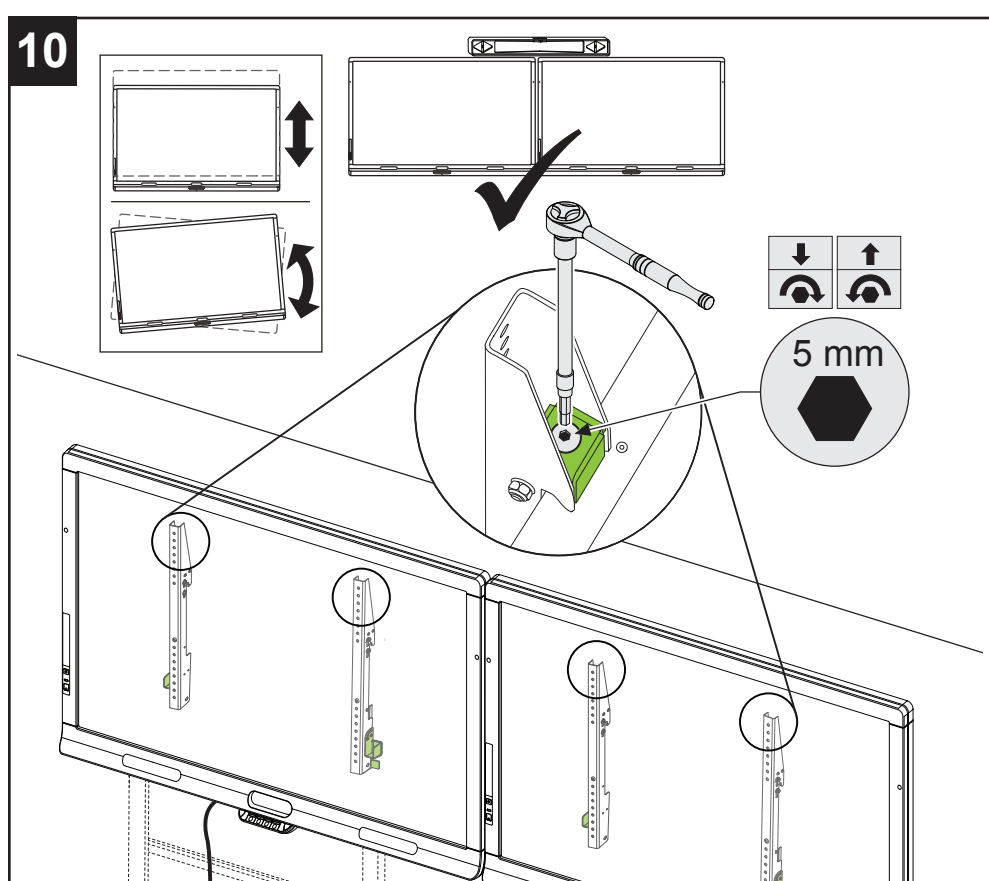
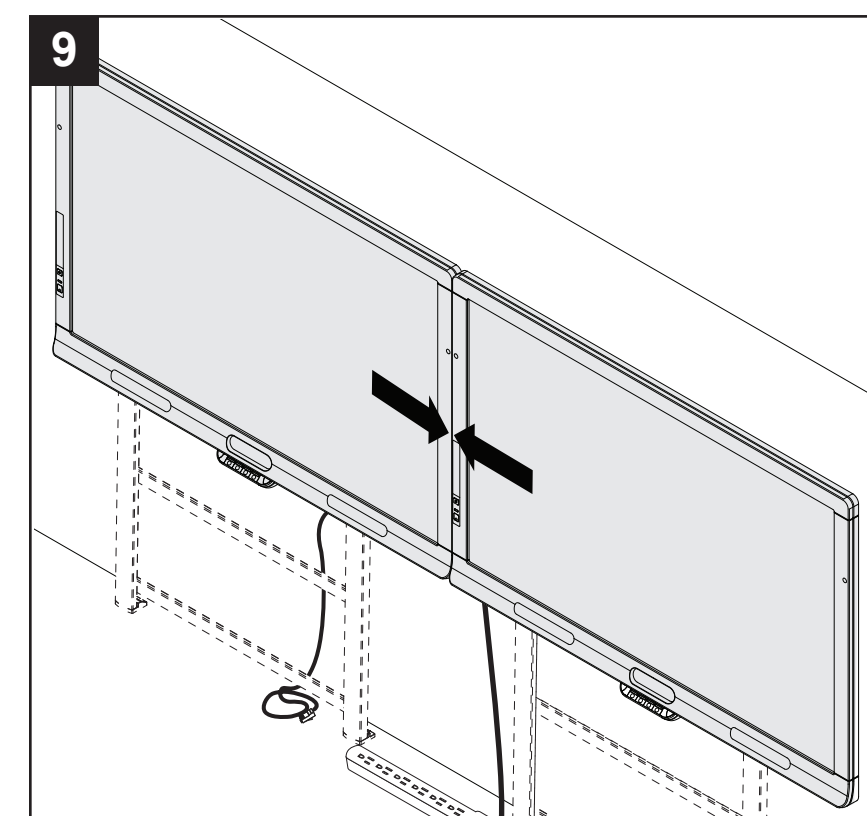
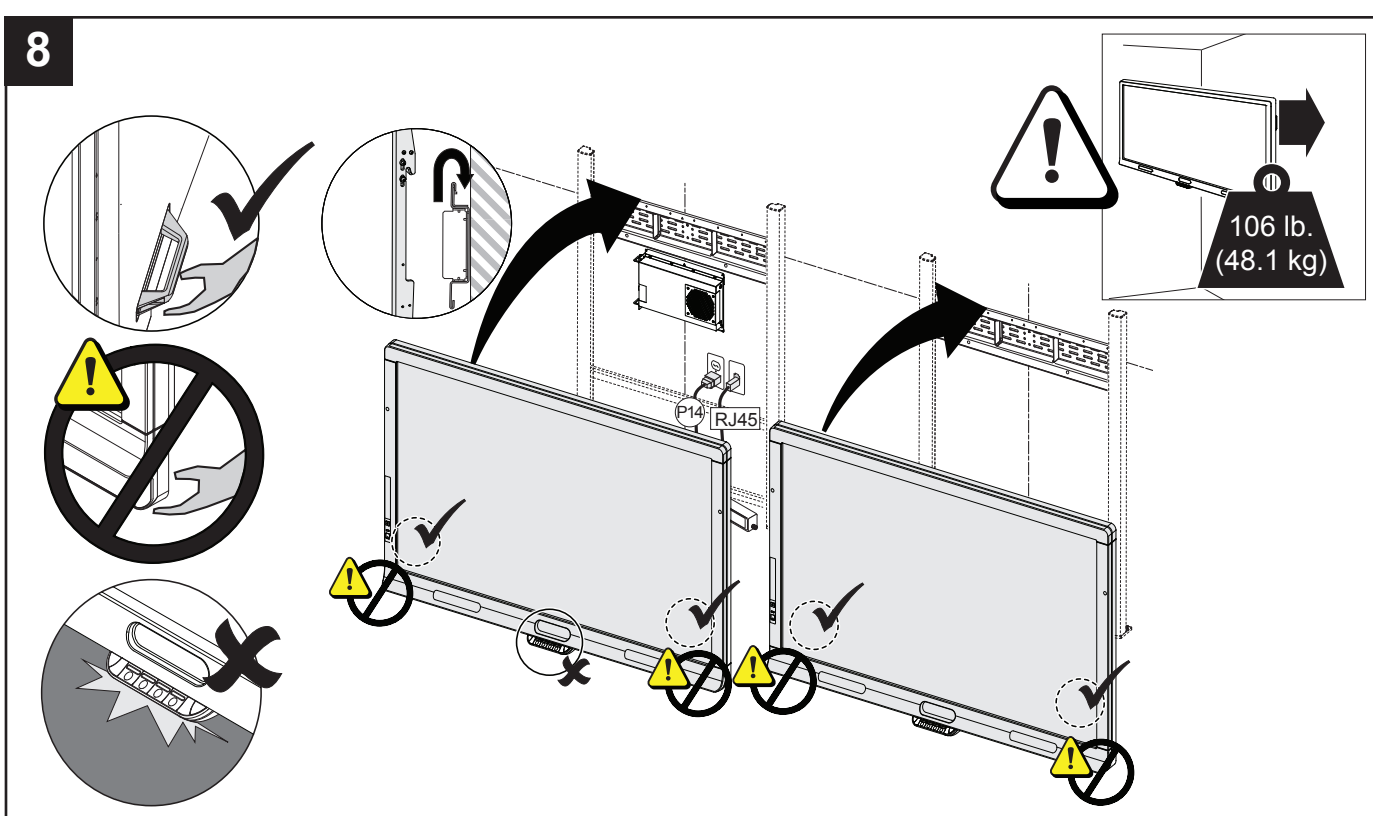
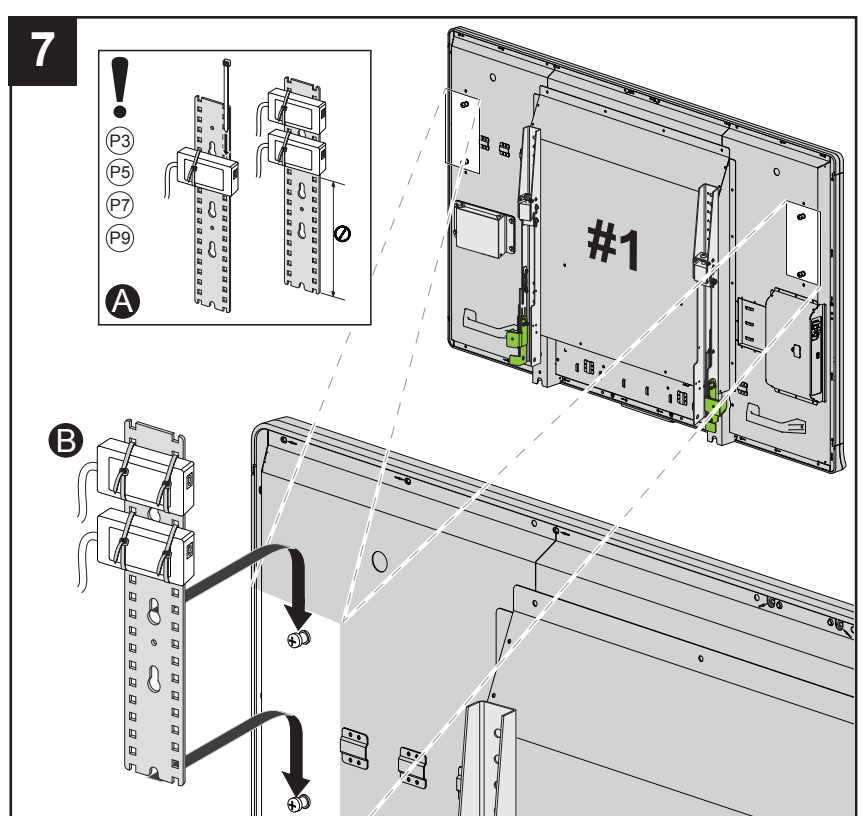
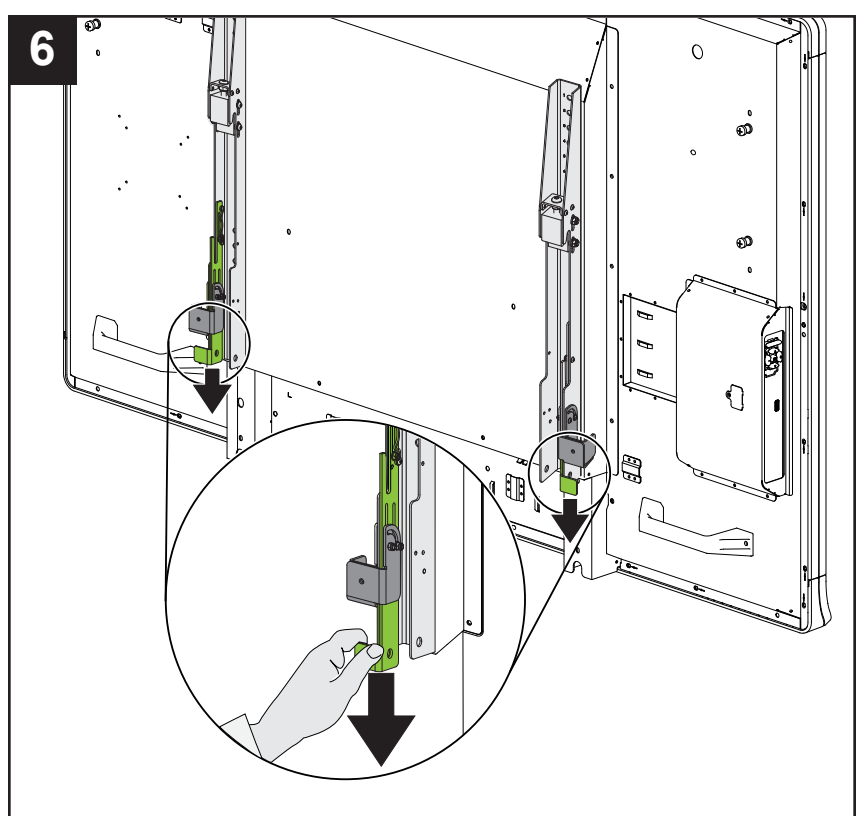
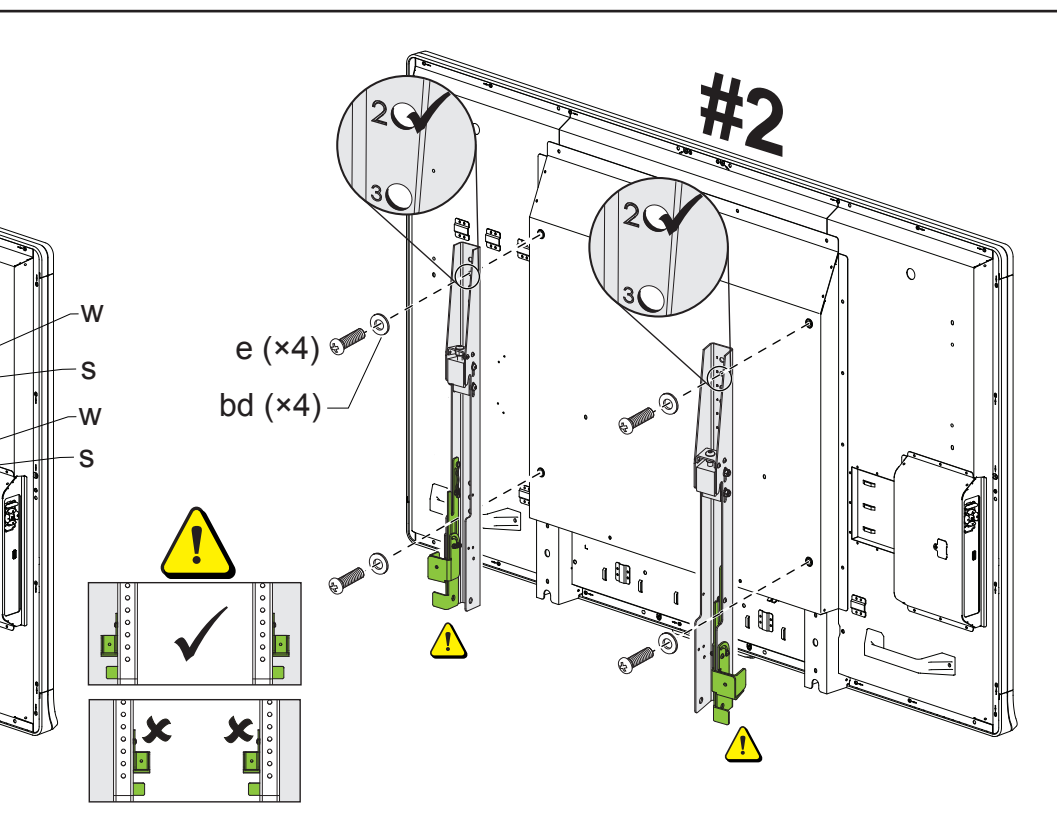
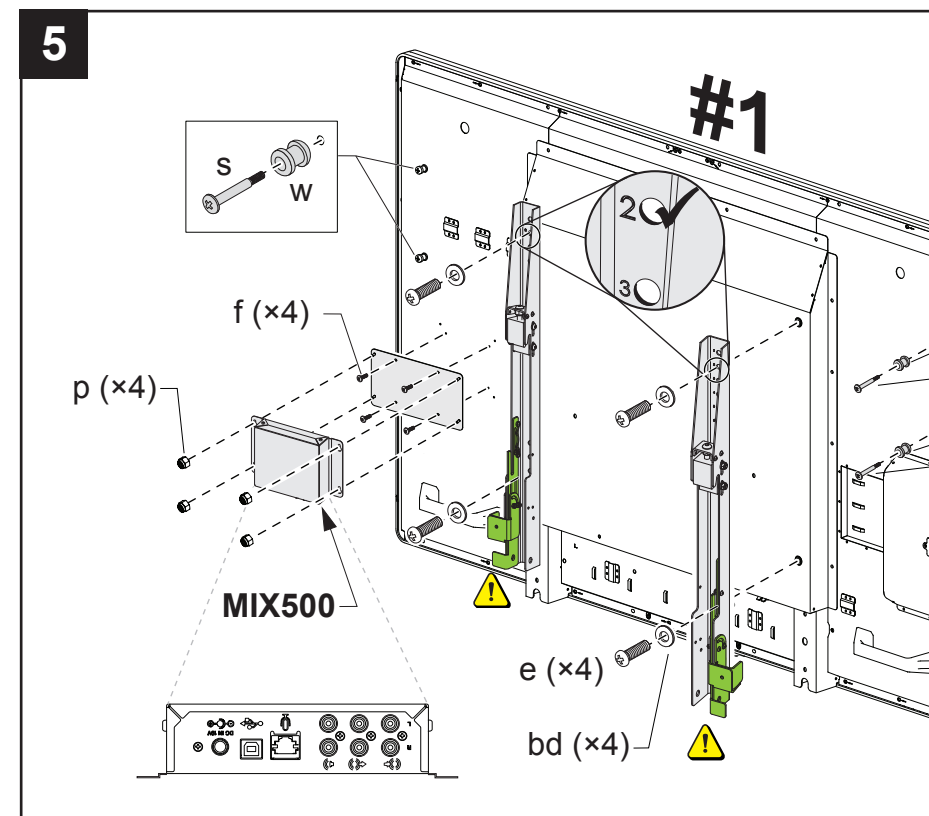
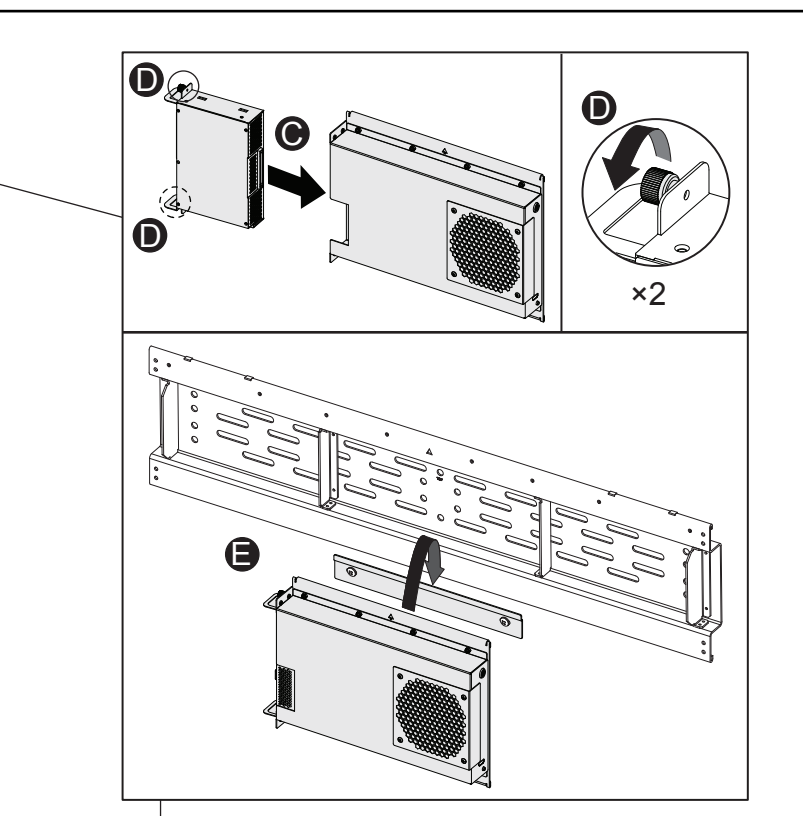
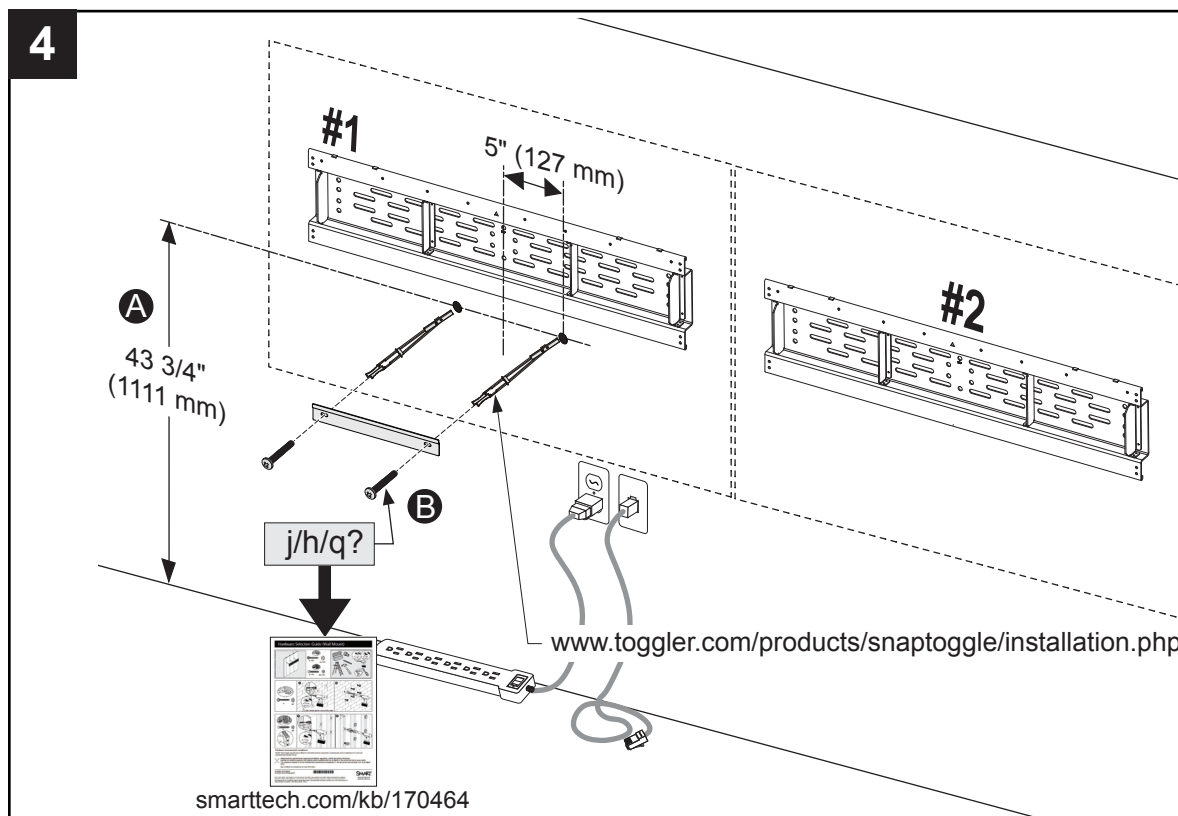
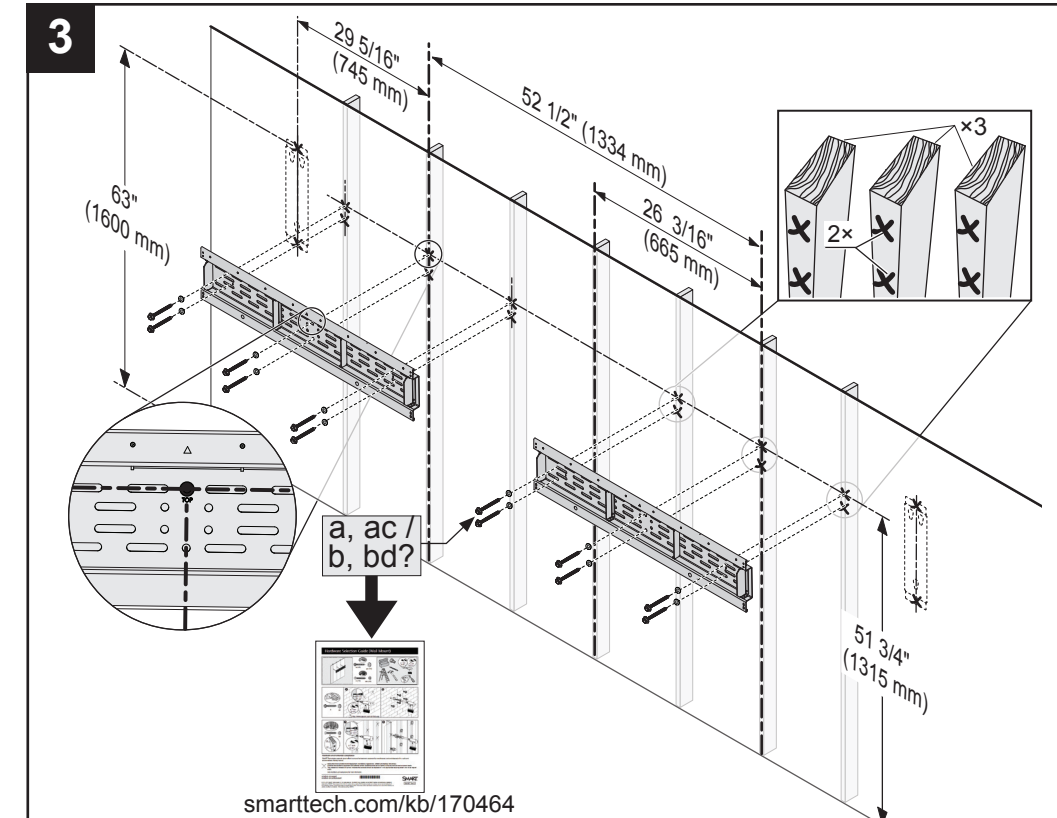
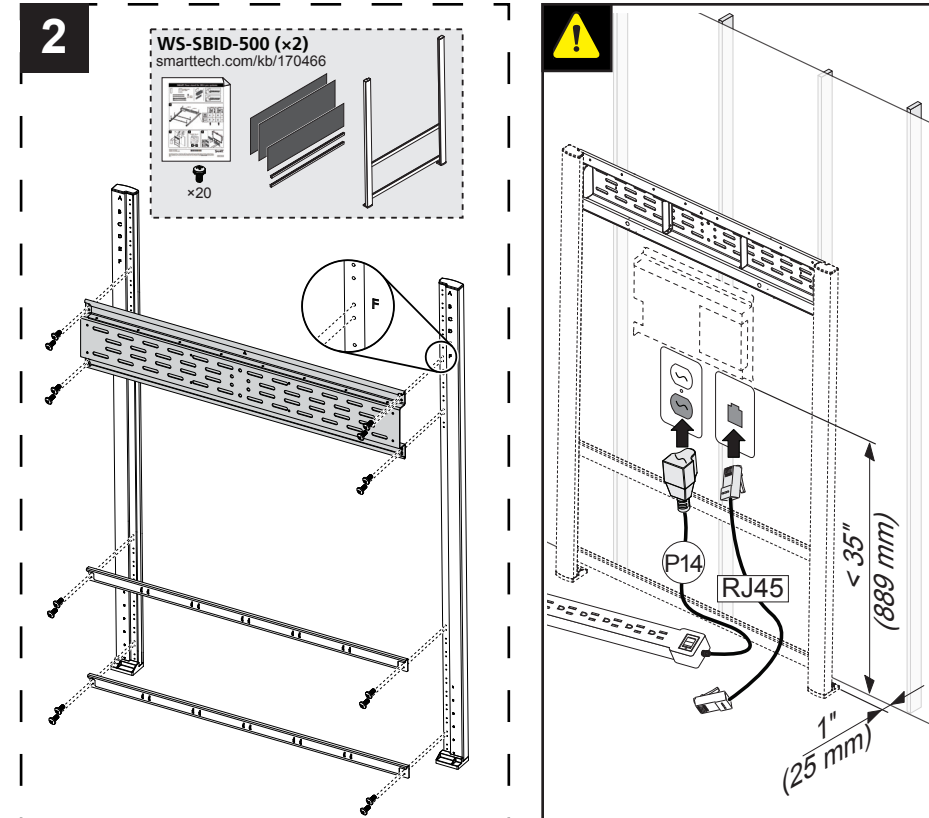
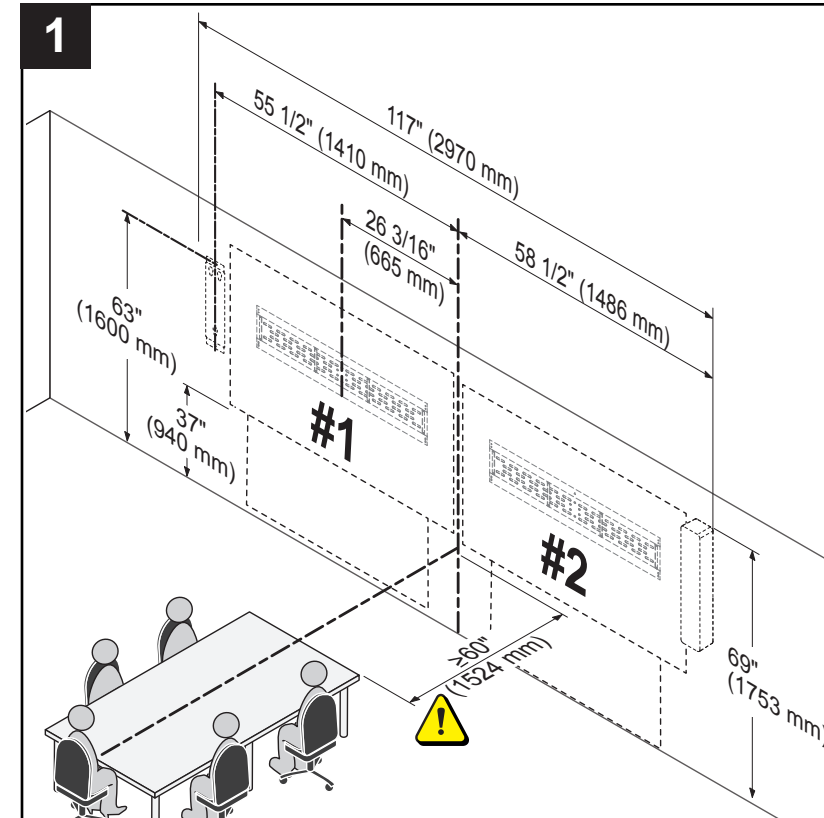
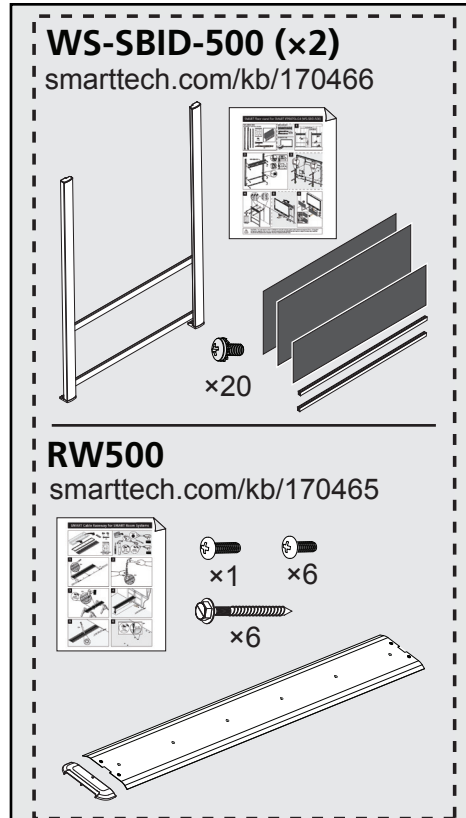
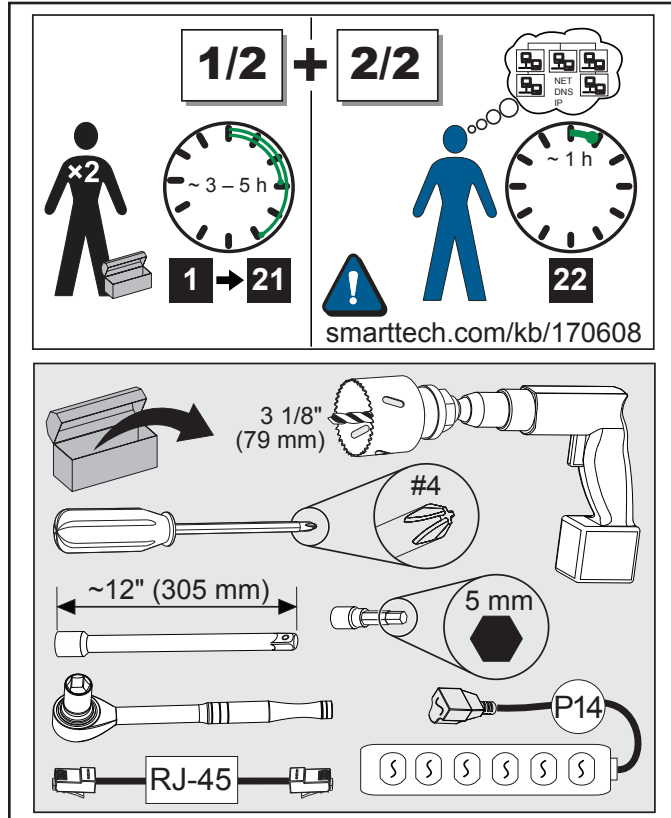
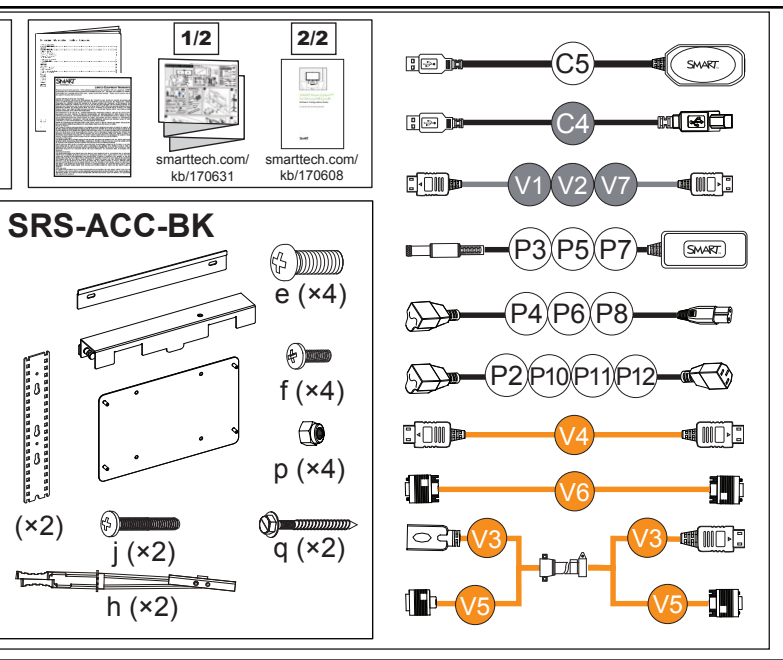
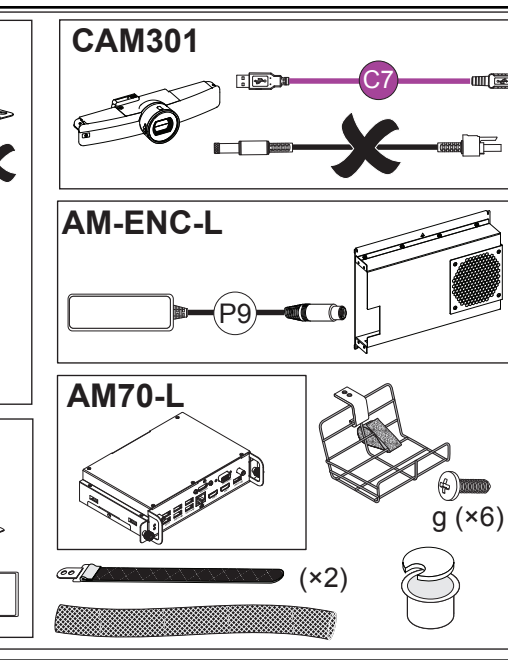
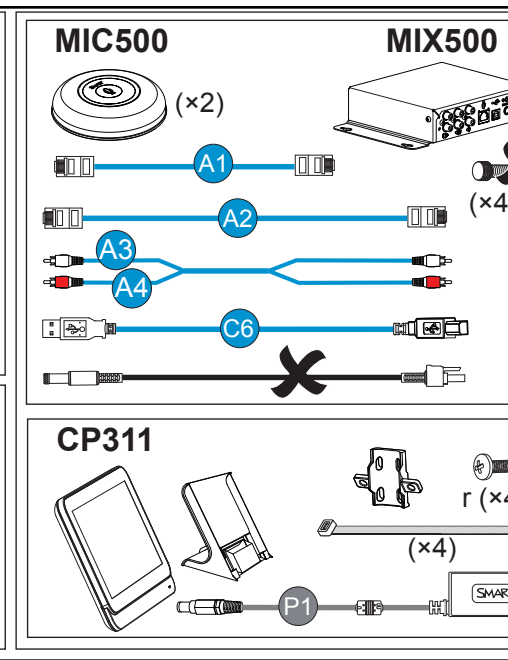
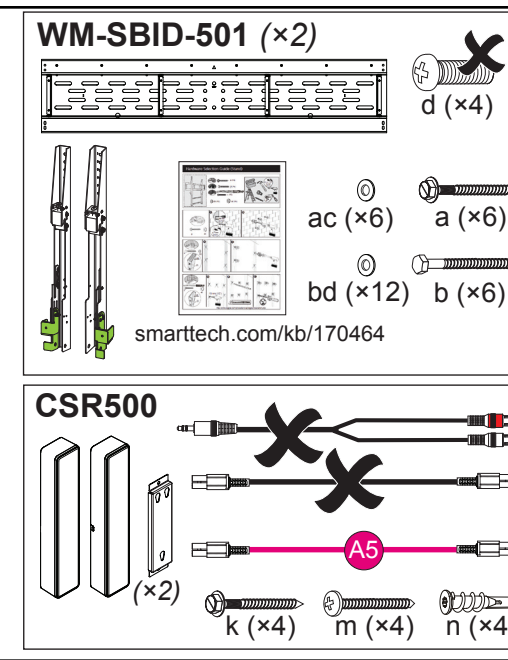
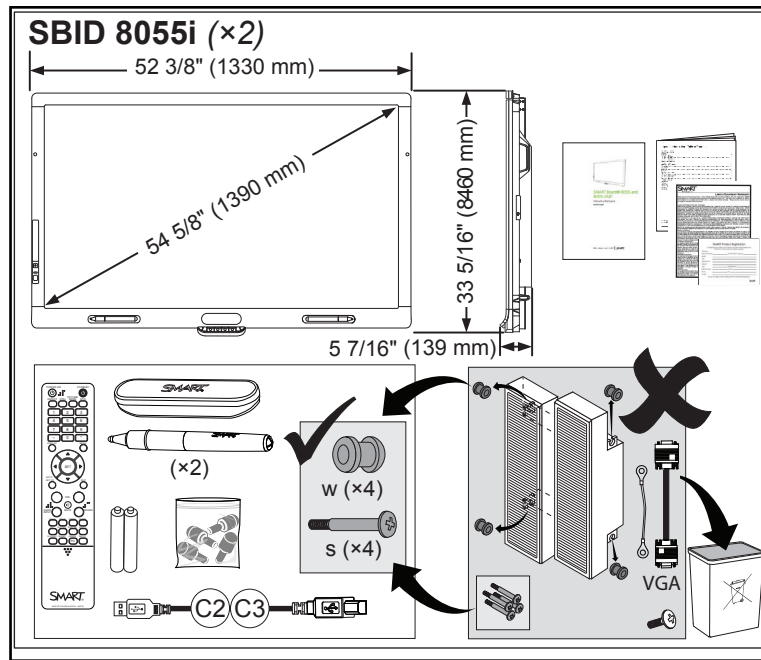
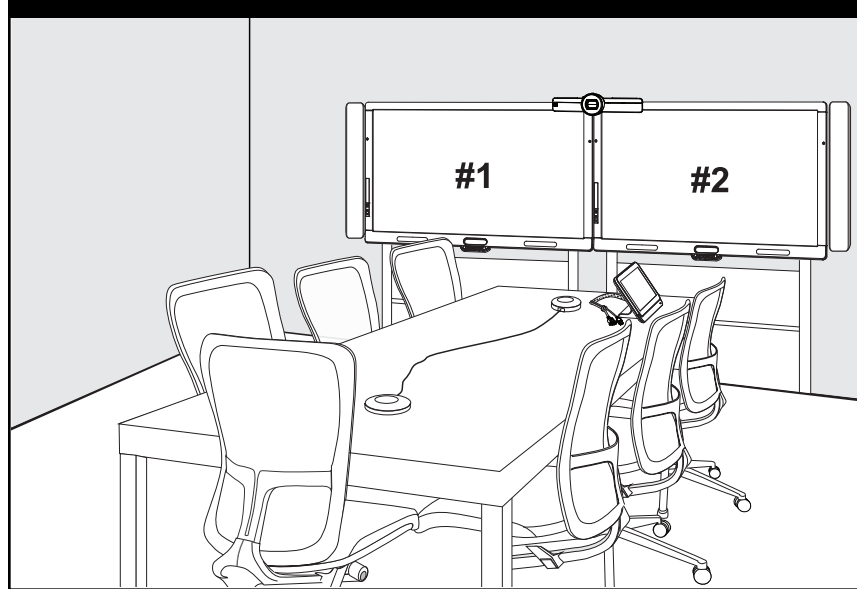
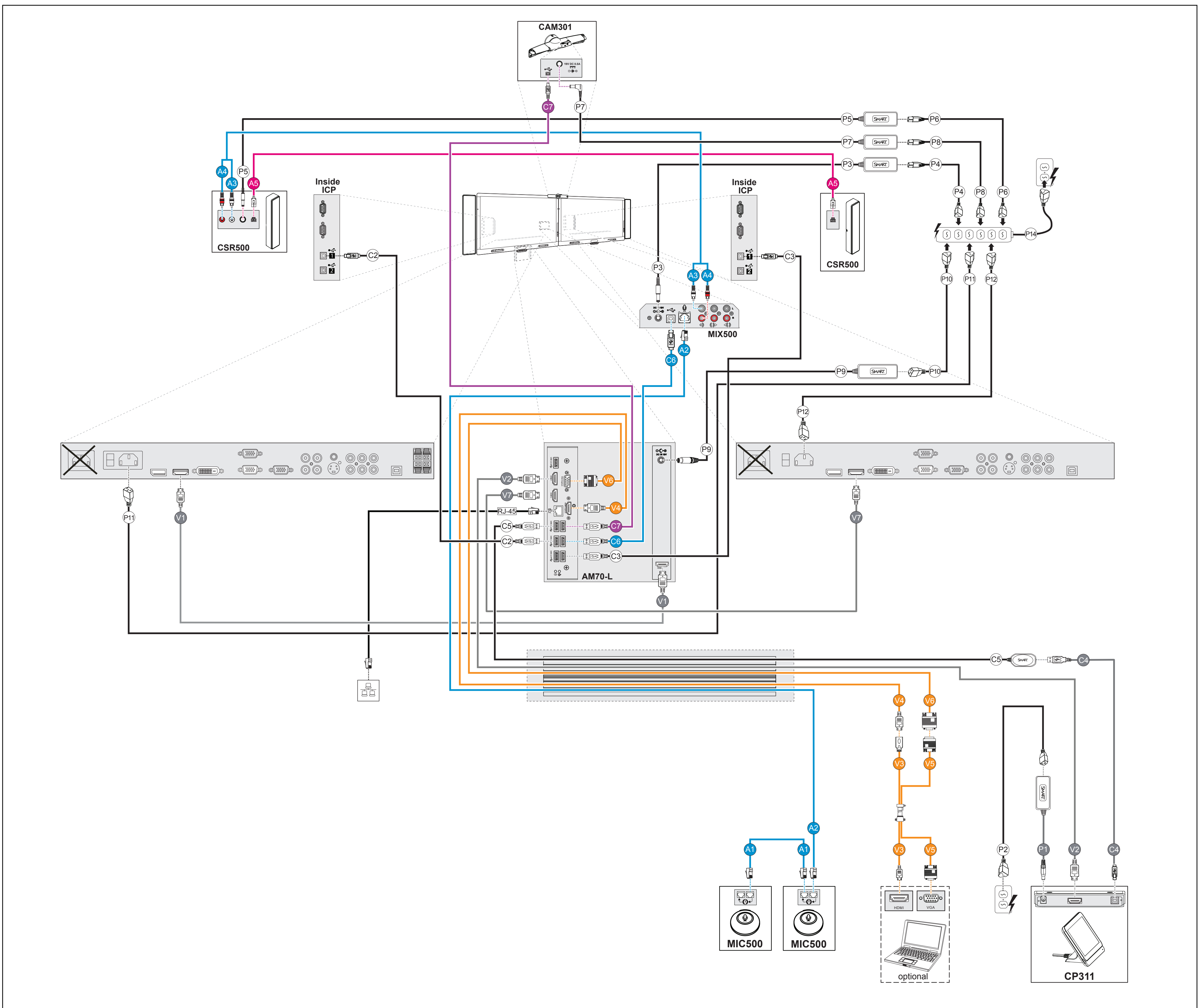
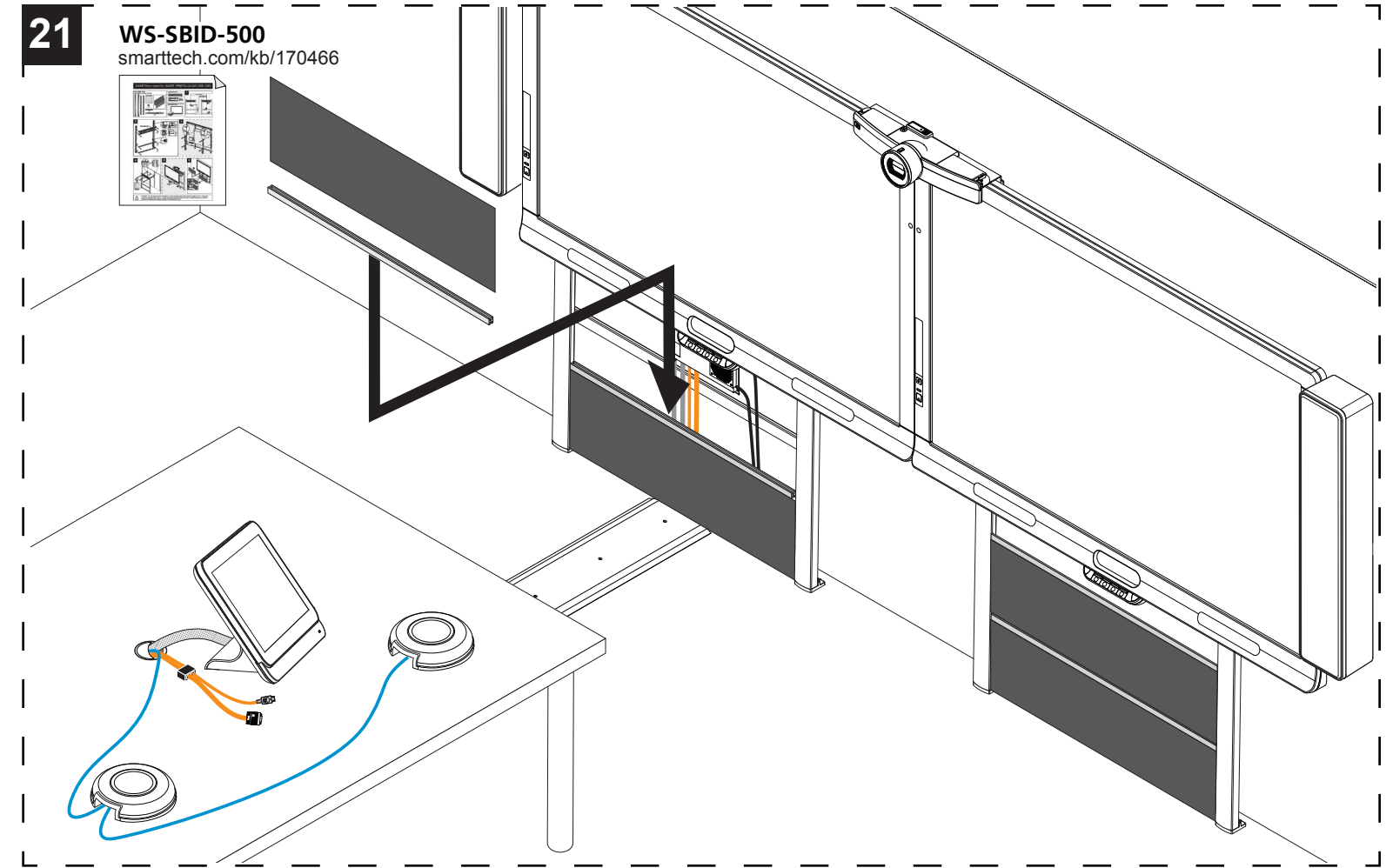
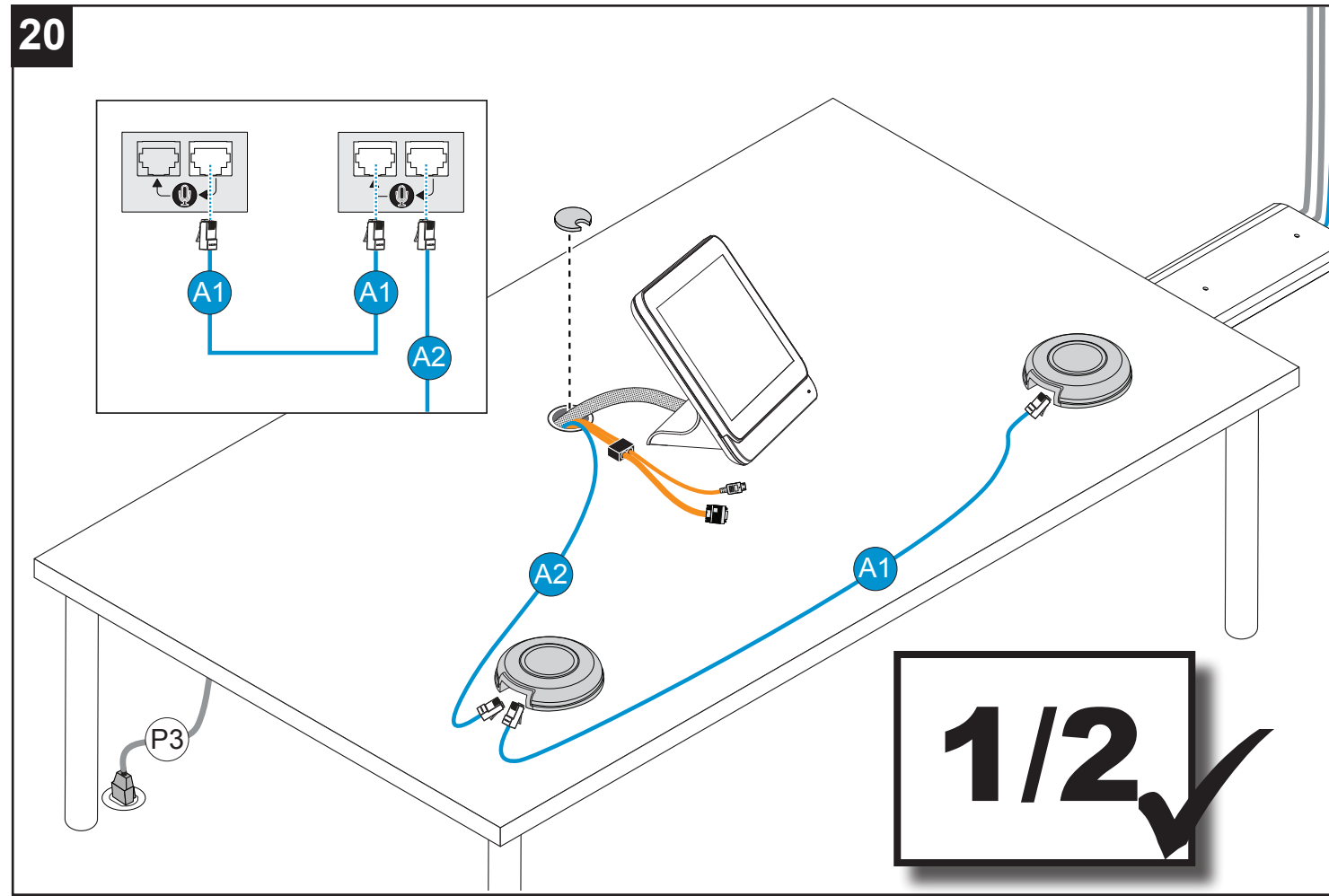
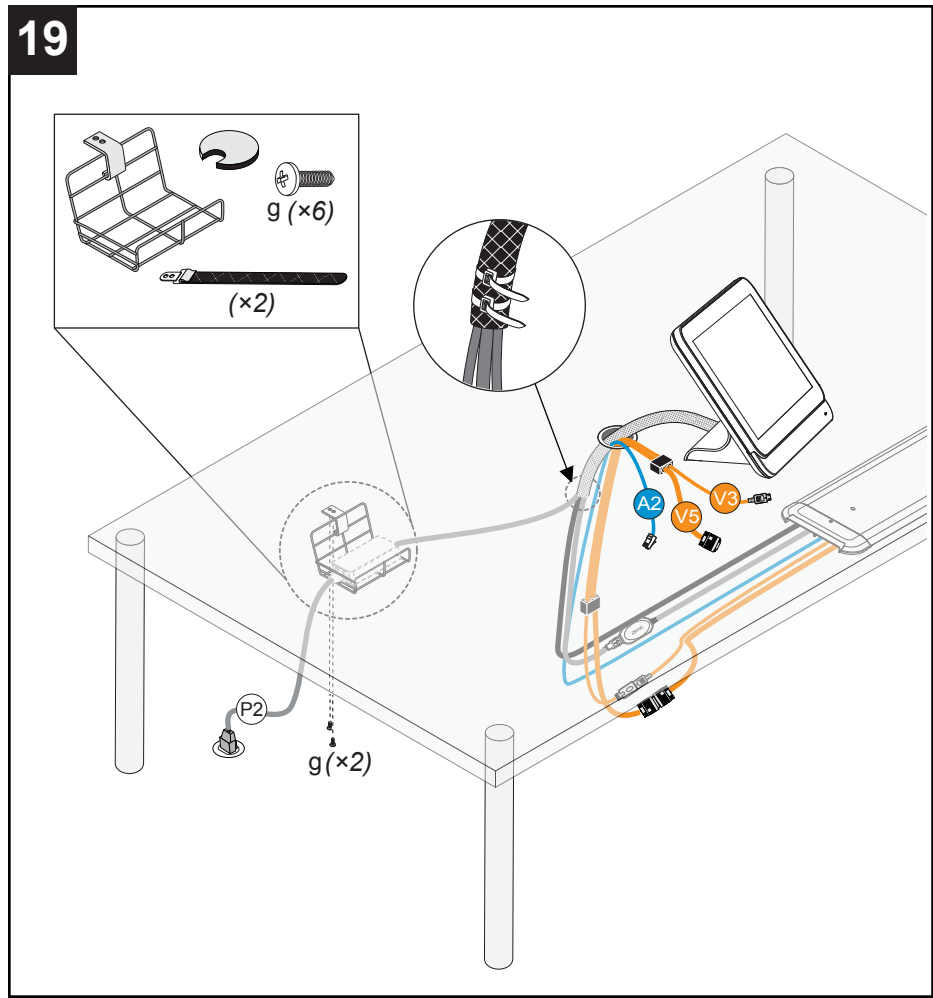
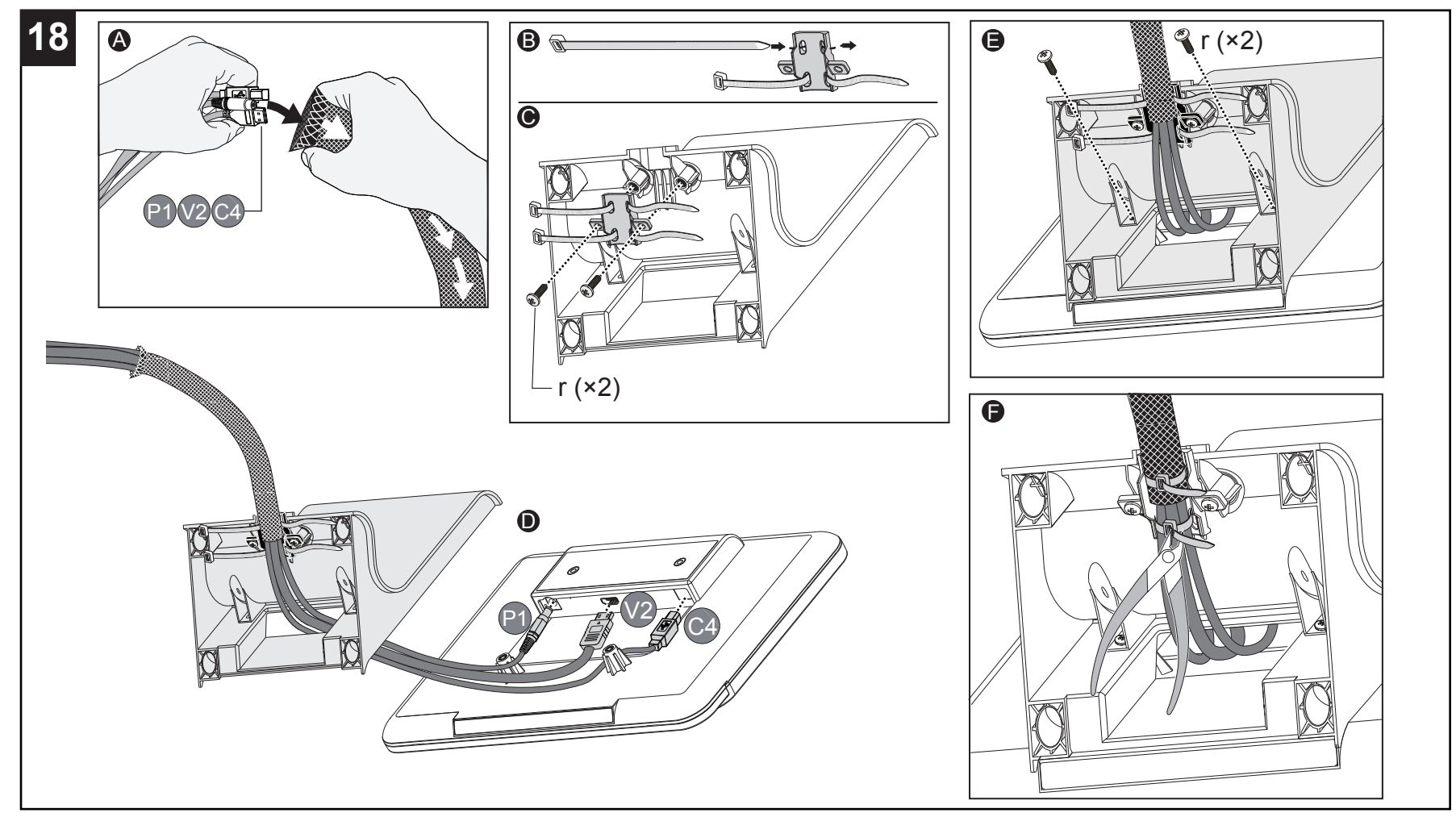
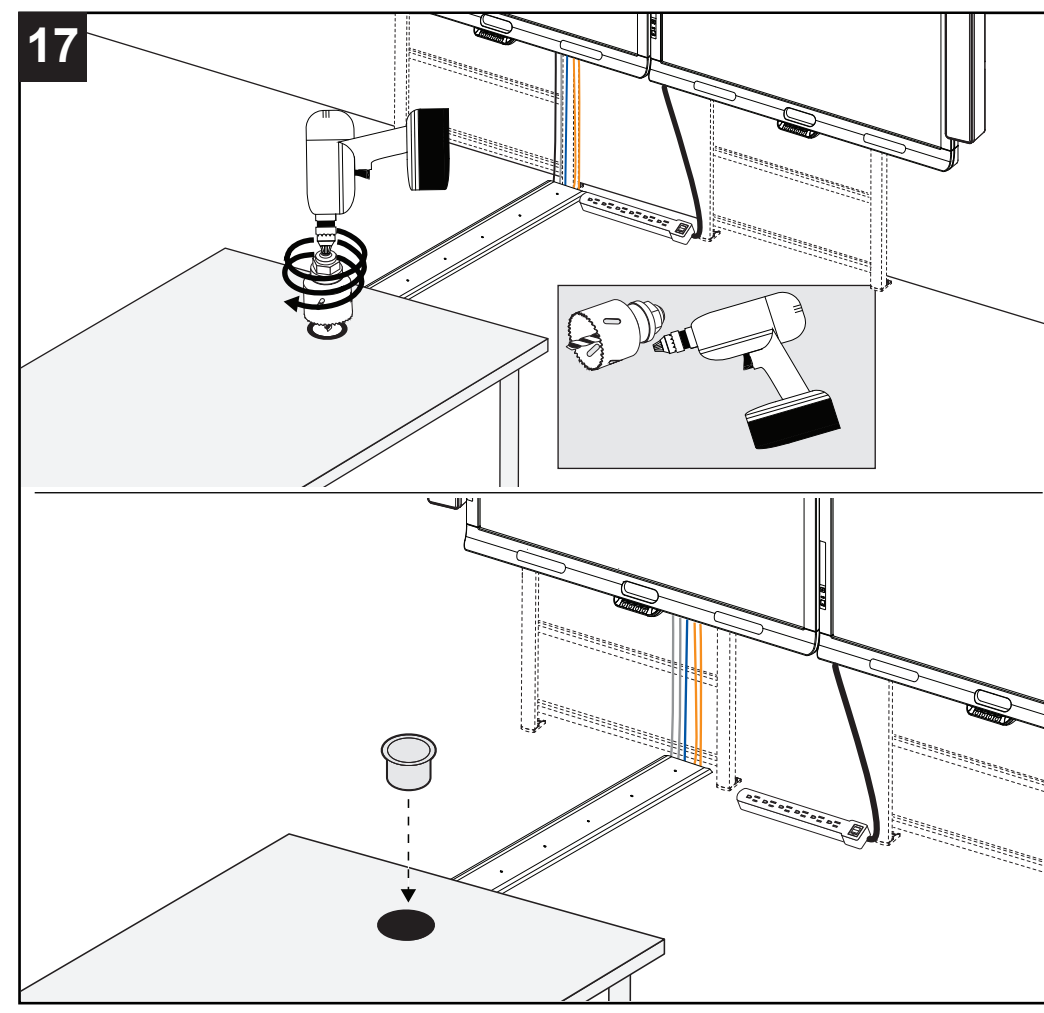
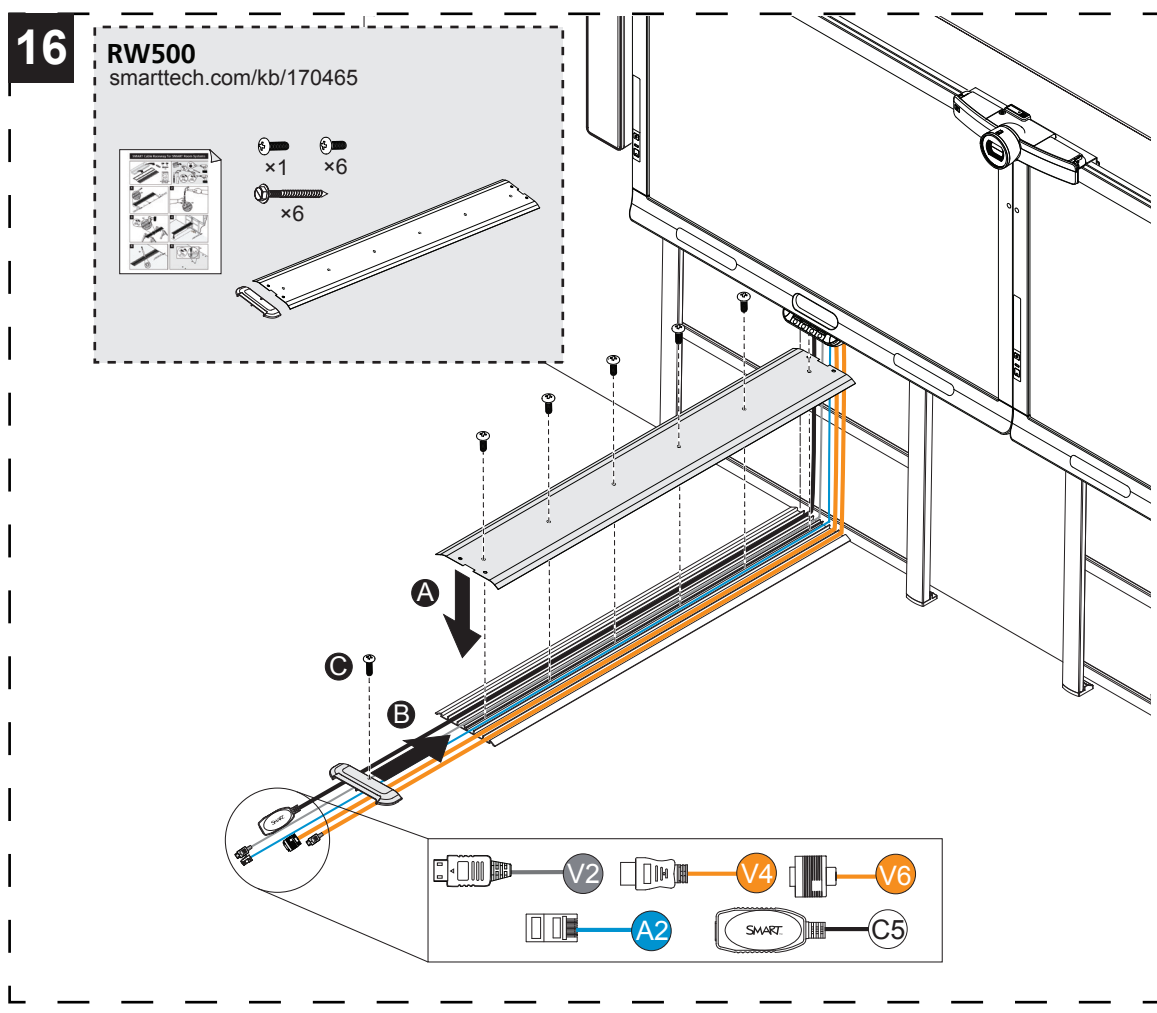


SMART Room System™ (SRS-Lync-M-Dual)





2/2

smarttech.com/kb/170608

smarttech.com/kb/170450

CAUTION: This wall mount or stand is intended for use with a display system with a maximum weight of 276 lb. (125 kg) and a maximum diagonal of 84" (214 cm). Use with products that are heavier than the maximum weight indicated may cause the mount and its accessories to collapse, resulting in possible personal injury.

Hardware environmental compliance
SMART Technologies supports global efforts to ensure that electronic equipment is manufactured, sold and disposed of in a safe and environmentally friendly manner.

Waste Electrical and Electronic Equipment and Battery regulations (WEEE and Battery Directives)
Electrical and electronic equipment and batteries contain substances that can be harmful to the environment and to human health. The crossed-out wheeled bin symbol indicates that products should be disposed of in the appropriate recycling stream and not as regular waste.

Batteries
The remote contains two AAA alkaline batteries. Recycle or dispose of batteries properly.

See smarttech.com/compliance for more information.

smarttech.com/support
smarttech.com/contactsupport

SMART
smarttech.com/kb/170631
1022936 Rev 02